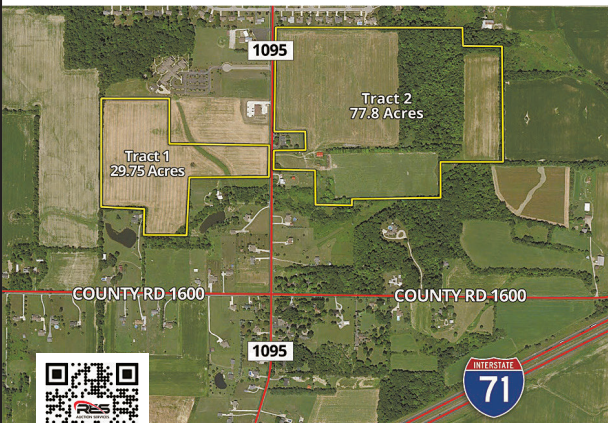


# RESIDENTIAL DEVELOPMENT LAND AUCTION

**107± ACRES - ASHLAND, OHIO**  
**SAT, OCTOBER 29<sup>TH</sup> • 10AM**  
**LIVE AUCTION HELD ON LOCATION**



**SCAN TO RECEIVE UPDATES**

**Real Estate:** Over the past several years, we have watched the City of Ashland progress and truly become someplace special. Downtown revitalization, new school buildings, major updates to infrastructure, and the addition of multiple businesses with great paying jobs has created an exceptional need for quality housing. Today we present to you 107 acres naturally in line to be Ashland's next residential development. Like a blank canvas, this land is currently mostly open and tillable with nearly every acre usable. The property borders existing desirable developments and offers good character with great access. Midway between Cleveland and Columbus, the location is tremendous with easy access to major traffic routes. Our new fire station and University's Medical Center are half a mile away, the high school and middle school are within 2 miles, and Ashland University can be reached in a 5-minute drive. A short conversation with our mayor will show the cities desire and intent to lend all resources available to make this development a reality. Whether you are a real estate developer or investor looking to put your money where the return has potential to be great, this property has unlimited potential. The property will be offered in 2 parcels in a live auction with online bidding available at [www.RES.bid](http://www.RES.bid).



**Andy White 419-651-2152**  
**Brock Rader 419-651-7994**  
**Joseph Mast**  
**Seth Andrews, Broker**

**(833) 765-3737 • [www.RES.bid](http://www.RES.bid)**